

[Search for Housing](#)

[Print Page](#)

Studios Only Project Based Voucher (PBV) Housing Program

# Lake Street Studios

727 W Lake St Chicago, IL 60661

Ready to Apply?

## Ready to Apply?

### 1. Review Program Types and Eligibility

Please read important information about our program types and your eligibility.

- [Program types](#)
- [Eligibility requirements](#)
- [Household size to number of bedrooms](#)

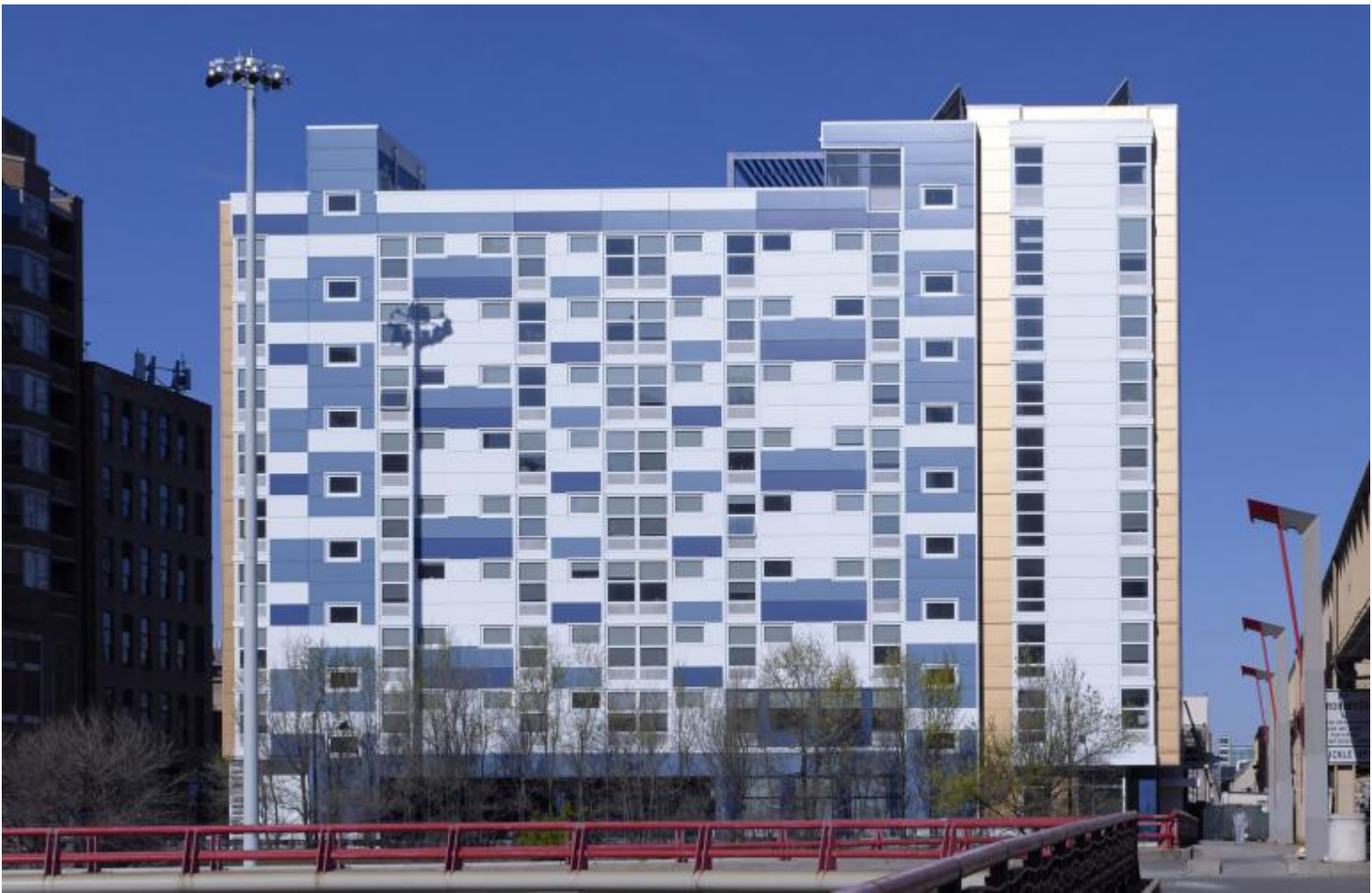
### 2. Fill out Application

Start your waitlist application process.

[Apply](#)

**Need assistance?** [View our Help Center](#)

Do you have questions? Read our [frequently asked questions](#) to find the answers you need.



## **Target Audience**

Individuals

## **Community Area**

Near West Side

## **Closest Intersection**

N Halsted St & W Madison St

## **Estimated wait time for eligibility screening**

- 0-1 Bedroom  
over 25 years
- 2 Bedrooms  
N/A
- 3 Bedroom  
N/A
- 4 Bedroom  
N/A
- 5 Bedroom  
N/A
- 6 Bedroom  
N/A

## Property Description

Lake Street Studios is a 61-unit property located in Chicago's Near West Side community. CHA provides rental assistance through its Project Based Voucher (PBV) program to 61 studio units. \* All units are Studios for Single-person households. \* All utilities are included, including electricity. \* Note: Building requirements are established by the individual property and not by the CHA.

## Unit Type

Bedroom Size	Standard Apartments	Accessible Apartments	Total Number of Apartments
Studio	56	5	61

## Additional Information

Information Title	Information Description
<b>Gas Bill</b>	No, it is not the resident's responsibility to pay for this utility
<b>Electric Bill</b>	No, it is not the resident's responsibility to pay for this utility
<b>Water Bill</b>	No, it is not the resident's responsibility to pay for this utility
<b>Elevator</b>	Yes, there is an elevator at this property
<b>Application Fee</b>	There is no application fee
<b>Income Eligibility</b>	Maximum income 0-80% of area median income (AMI). Click <a href="#">here</a> to view the AMI income limits by household size.
<b>Work Requirement</b>	N/A
<b>Drug Screening</b>	There is drug screening

Screening measures include a criminal background check and may include a credit check, home visit, etc.

## Helpful Resources

We have provided a collection of helpful resources for you to find important information about this community and its surroundings.

- [Schools](#)
- [Libraries](#)
- [Transportation Routes](#)
- [Park District](#)
- [Grocery Stores, Restaurants](#)

Featured Properties

## Other Properties You Might Want to Review

Featured properties may have shorter wait times, be new to CHA's portfolio, or serve a specific population.